

McLeod County Resource Directory



This publication is meant to serve as a guide to assist McLeod County professionals and families in accessing services.

No endorsement of service or quality is being implied or promoted by the sponsors.

No endorsement of services is being implied or promoted.

**Update Form
Original – Please Make Copies
McLeod County Resource Directory Information**

Date: _____

Agency Name: _____

Address: _____

Phone: _____ Ext. _____ Fax: _____

Email Address: _____

Services Provided: (List briefly – If more space is needed, please use the back of this page)

Special Considerations: (Fees, Hours, Eligibility, After Hours Phone Number, etc.)

Name and Phone Number of Person Completing this Form: _____

Tari Niemeyer
McLeod County Thrive Initiative/Ridgewater College
2 Century Drive
Hutchinson, MN 55350
tari.niemeyer@ridgewater.edu

Table of Contents

Early Childhood Learning.....pages 4 - 8
Parenting Education.....pages 9 - 12
Schools.....pages 13 - 14
Financial Education and Counseling.....page 15
Hotline Numbers and Websites.....pages 16 - 19
McLeod County Law Enforcement.....page 20
Employment and Training.....pages 21 - 23
Domestic Violence.....page 24
Family Planning and Pregnancy Education.....pages 25 - 26
Clothing / Furniture & Children’s Equipment.....page 27
Food and Nutrition.....pages 28 - 31
Transportation.....page 32
Housing / Weatherization & Energy Assistance.....pages 33 - 34
Rental Properties.....pages 35 - 40
Legal / Court Services.....pages 41 - 43
Public Libraries.....page 44
Medical Resources.....pages 45 - 48
Medical Payment Programs.....page 49
Dentists.....pages 50 - 51
Dental Referrals.....page 52
Chemical Dependency.....pages 53 - 55
Mental Health and Counseling.....pages 56 - 58
Support Groups.....pages 59 - 62
Support Services.....pages 63 - 65
Churches.....pages 66 - 68
Camps.....pages 69 - 72
Clubs.....page 73

Early Childhood Learning

Glencoe

First Lutheran

320-864-3317

GSL School Readiness Preschool

Serving children 3-5 not yet in kindergarten, tuition on a sliding fee basis; 2 and 3 half day/week sessions

405 16th St E

Glencoe, MN 55336

320-864-2681

St. Pius X Preschool

1103 10th St. E

Glencoe, MN 55336

320-864-3214

Tri-Valley Migrant Head Start

1828 Knight Avenue North

PO Box 274

Glencoe, MN 55336

320-864-6635

(Services offered mid-June through the end of October. Eligibility requirements apply)



Wee Friends Creative Preschool

First Congregational Church

PO Box 182

Glencoe, MN 55336

320-510-1811

Howard Lake – Waverly – Winsted

Howard Lake – Waverly – Winsted Education Preschool Program

Provides stimulating social and educational experience to help children develop a positive attitude towards learning.

431 4th Street North

Winsted, MN 55395

320-485-2190

No endorsement of services is being implied or promoted.

Hutchinson

Noah's Ark Preschool

800 Bluff St NE
Hutchinson, MN 55350
320-587-3319

King's Kids Preschool (Christ the King Church)

Curriculum enhances emotional, social, spiritual, intellectual, and physical growth.
Developing the Christian attitudes of loving, helping, and sharing.
2 and 3 day sessions available. Must be 3 by September 1st and potty trained.

1040 South Grade Rd SW PO Box 369
Hutchinson, MN 55350
320-587-2776
320-234-6233 (fax)
320-234-6233 (fax)

Little Lambs Preschool (Peace Lutheran Church)

400 Franklin St SW
Hutchinson, MN 55350
320-587-3031

Little Lambs Christian Center (Peace Lutheran Church)

Childcare for infants, toddlers, preschool and school age children.
Hours: 6:30 a.m. – 6:30 p.m.
400 Franklin St. SW
Hutchinson, MN 55350
587-2629
Website: www.littlelambsmn.com

New Discoveries Montessori Academy Preschool Program

Preschool for children ages 3 and up.
1000 5th Ave. SE
Hutchinson, MN 55350
320-234-6362

Kid's Depot (St. Anastasia)

12 month child care program for ages 2 years 9 months to 11 years, 11 months, 3 weeks, before and after school care for school age children.

Hours: 6:45 a.m. – 6:00 p.m.

400 Lake Street
Hutchinson, MN 55350
320-587-4760
320-234-6756 (fax)
Email: depot@stanastasia.net

Kids, Inc. Child Care Centers of Minnesota

We provide quality child care for children ages 6 weeks – 11 years old. We have a clean, safe environment. We promote learning through a variety of play opportunities including field trips. We also offer preschool classes for children ages 3-5 years of age.

Hours: 5:30 a.m. – 6:15 p.m.

566 Bluff Street
Hutchinson, MN 55350
320-587-5437
320-234-6358 (fax)
Email: director@ekidsinc.com
website ekidsinc.com

Kidz Junction

Child care services for infants, toddlers, preschool, and school age children (6 weeks to 12 years old). We offer structured and leisure activities, special activities and attractions (entertainers, guests, field trips). Our overall purpose is to be a contributing factor in the development of the child's physical, intellectual, emotional and social growth to his/her greatest potential.

Hours: 6:00 a.m. – 6:30 p.m.

67 4th Ave NW
Hutchinson, MN 55350
320-234-7212

Heartland Community Action Agency, Inc.
320-235-0850 or 800-992-1710

Heartland Child Care Resource & Referral

For parents: Free individualized child care referrals. Call (866)511-2244.

For child care providers:

*Access to grants for training, program improvements and new program start-up.
Call (800)292-5437

* Training opportunities. Call (877)311-2244

* Consultation and resource library. Call (800)221-1421

Head Start Programs

Center Based: Classes meet 3-4 days each week during regular school hours. Transportation provided. Breakfast, lunch and snack provided.

Home Based: Teachers visit home for 1 ½ hours per week. Group activities offered twice a month.

Combination Option: Two center days per week and two home visits per month.

Health screening provided. Parent training and opportunities for parent involvement are available. Services vary by community. Income eligibility requirements.

Box 36
Cosmos, MN 56228
Phone: 320-235-0850 or 800-992-1710

- Glencoe 320-864-6469
- Hutchinson 320-234-6306

Tri-Valley Migrant Head Start

Services offered mid-June through the end of October. Children from 6 weeks to pre-school. Developmentally appropriate education program with family support and education.

Hours: 13 ½ hours per day (June – August) and 9 ½ hours in September

No fees – Eligibility: Family must have made a significant move in the past 2 years to seek seasonal agricultural employment.

Box 274
1828 Knight Avenue North
Glencoe, MN 55336
Phone: 320-864-6635

Contact your local school district for the following services:

Early Childhood Screening: Eligible children are 3 ½ to 5 years old. A screening, through the school system, is required of children before first grade.

Early childhood Special Education (ECSE): Eligible children are those who are determined to have a special need following testing conducted by the school district. Any guardian of a child from birth through age 6 may request an evaluation. The types of services which are needed by a child and the location where the services will be delivered are determined on a child by child basis.
Phone: 1-800-450-3185

School Readiness: Children come weekly, independent of their parents. Aims of the preschool are socialization, developing an interest and joy in learning, making a successful transition between home to school, developing self expressions, self control, creativity and responsibility, following directions, being a good listener and communicator.

- Glencoe/Silver Lake 320-864-2681
- Howard Lake/Waverly/Winsted 320-543-3471
- Hutchinson 320-587-4470
- Lester Prairie 320-395-2909
- McLeod West/Brownton 320-328-5214
- McLeod West/Stewart 320-562-2110

No endorsement of services is being implied or promoted.

Parenting Education

Early Childhood Family Education (ECFE)

Classes for parent and children to attend together. Speakers, field trips, support groups, home visits, toy and book libraries, and special family events. Small registration fees for classes, financial scholarships available.

Phone numbers:

- Brownton 320-328-5214
- Glencoe/Silver Lake 320-864-2681
- Hutchinson 320-587-8908
- Lester Prairie 320-395-2521
- Stewart 320-562-2110
- Winsted 320-543-2190

Pioneer Library System:

Phone numbers:

- Brownton 320-328-5900
- Glencoe 320-964-3919
- Hutchinson 320-587-8908
- Winsted 320-485-3909

Heartland Community Action Agency, Inc.

218 Main Street South, Suite 108
Hutchinson, MN 55350
320-235-0850 or 800-992-1710



Head Start

Parent training and opportunities for parent involvement provided.

Self Sufficiency Program

Provides individualized case management and assistance with goal-setting to achieve greater self-sufficiency.

101 Vesta Street S
P.O. Box 36
Cosmos, MN 56228
320-235-0850 or 800-992-1710

H.E.L.P. Kids! (Helpful Easy Lessons for Parents and Kids!)

Parents and professionals who work with children come to me when the kids in their lives are driving them crazy! H.E.L.P Kids! Assists parents in identifying what their challenges are, recognize how their own behaviors impact those challenges, and modify those behaviors to shift the challenges.

(320)523-5717
Olivia, MN 56277

Info-U

Information on parenting, child development, and a variety of other topics. Free brochure available.

University of Minnesota Extension Service – McLeod County
840 Century Ave
Hutchinson, MN 55350
320-587-0770 or 800-587-0770
320-234-4310 (fax)

McLeod County Public Health

Family Home Visitor program, in-home parenting skills, support, and referral to additional services. Maternal Child Health home visits to expectant and new parents. No charge to families in McLeod County who have children pre-birth to 5 years of age.

Phone numbers:

- Brownton/Glencoe/Silver Lake 320-864-3185
- Hutchinson 320-587-4680
- Stewart 320-328-4413
- Winsted 320-395-2568

TEPP (Too Early Pregnancy Prevention Program)

Sexual health video lending library. Presentations to teens and parents on values, self esteem, communication skills, healthy sexuality, decision making, relationship skills, teen pregnancy, and parenting. No fee.

Phone numbers:

- Brownton/Glencoe/Silver Lake 320-864-3185
- Hutchinson 320-587-4680
- Stewart 320-328-4413
- Winsted 320-395-2568

Project Harmony

Project Harmony is a program of Meeker-McLeod-Sibley Community Health Services (CHS). In January of 2006 they were awarded a grant through the Minnesota Organization on Fetal Alcohol Syndrome (MOFAS). Goals and objectives for this grant include coordinating education and providing services of prevention, intervention, and support concerning Fetal Alcohol Spectrum Disorders (FASD).

For more information:

www.mmspublichealth.org

Phone number: 320-510-1449

McLeod Social Service Center

In-home parent education and support. Services to minor parents. Parenting resources. Free of charge to all eligible families.

1805 Ford Ave N, Suite 200
Glencoe, MN 55336

Phone Numbers:

- Glencoe 320-864-3144
- Hutchinson 320-587-9533
- Stewart and Winsted 800-247-1756

Parent Connection

Parent support group with trained facilitators and a structured child care program. No charge. Monday evenings 6:30-8:00 p.m. for parents of children zero to preteen, 8:00-9:30 p.m. for parents of adolescents. For further information, call 320-587-8639.

Meets at: Christ the King Lutheran Church
1040 South Grade Road SW
Hutchinson, MN 55350
320-587-8639

University of Minnesota Extension Service

Research based information that connects community needs with University resources. Including information on adolescent issues, school age development, and parenting resources.

840 Century Avenue
Hutchinson, MN 55350-3754
320-587-0770 or 800-587-0770
mcleod@extension.umn.edu
320-234-4310 (fax)



No endorsement of services is being implied or promoted.

Schools

An “E” indicates early childhood programs are available at the site.

Public

Area Learning Centers

Alternative high school program

Eligibility: Out of school 90 days or with a waiver. Check with your local high school counselor.

Willmar Service Center

Special Education Cooperative servicing students birth – 21 in the following school districts within McLeod County. Glencoe / Silver Lake, McLeod West and Lester Prairie.

320-231-5184

Cultivating Excellence – GSL Schools

Summer school enrichment for migrant students. Grades 1-12 are served. Free meals (3) for any child under 18 are provided.

1621 East 16th Street
Glencoe, MN 55336
320-864-2666
320-864-2475 (fax)

Glencoe/Silver Lake

Superintendent’s Office (Lincoln School (7 & 8)	320-864-2498
High School Office (9-12)	320-864-2400
Helen Baker Elementary (E-2)	320-864-2666
Lakeside (3-6)	320-864-2500

Howard Lake/Waverly/Winsted

Superintendent’s Office	320-543-3521
High School (7-12)	320-543-3471
Elementary (Howard Lake: K-3)	320-543-3501
Elementary (Waverly: 4-6)	763-658-4633
Elementary (Winsted: Preschool-3)	320-485-2190

Hutchinson

Superintendent’s Office	320-587-2860
High School (9-12)	320-587-2151
Middle School (6-8)	320-587-2854
Park Elementary (2-5)	320-587-2837
West Elementary School (E-1)	320-587-4470

No endorsement of services is being implied or promoted.

New Discoveries Montessori Academy 320-234-6362
New Century Charter School 320-234-3660

Lester Prairie

High School (7-12) 320-395-2521
Elementary School (K-6) 320-395-2909

Private Schools

Glencoe

First Ev. Lutheran (E-8) 320-864-3317
St. Pius X 320-864-3214

Hutchinson

Agape Christian Academy 320-587-9443
Hutchinson Seventh Day Adventist (K-8) 320-234-5994
Immanuel Lutheran (K-8) 320-587-4858
Maplewood Academy (9-12) 320-587-2830
Our Savior's Lutheran (K-6) 320-587-3318
St. Anastasia (K-6) 320-587-2490
St. John's Lutheran 320-587-3851

Silver Lake

Holy Family Catholic School (PK – 6) 320-327-2356

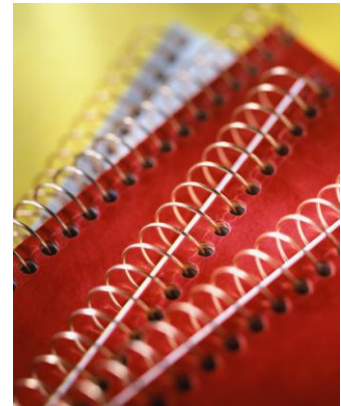
Winsted

Holy Trinity Elementary 320-485-2314
Holy Trinity High School 320-485-2182

Post-Secondary

Ridgewater College (Campuses in Hutchinson and Willmar)
Liberal Arts and Technical Degrees, self-paced learning options available, financial aid,
customized and continuing education, Minnesota Career Information System (MCIS),
DISCOVER, Connections Center, Adult Basic Education, GED,
ESL, post-secondary options.

Hutchinson and Willmar Campuses
320-234-8500 or 800-722-1151



Financial Education and Counseling

Consumer Credit Counseling Service (CCCS)

CCCS works with individuals and families to establish budgets and debt repayment plans for financial wellness.

www.lssmn.org/debt

University of Minnesota Extension Service – McLeod County

Provide group and one-to-one educational programs and assistance on money management, budgeting, credit and debt management, farm financial and business management for individuals and families.

840 Century Avenue
Hutchinson, MN 55350
320-587-0770 or 800-587-0770
Mnext-mcleod@umn.edu
320-234-4310 (fax)

Hotline Numbers and Websites

AIDS

Minnesota Aids Hotline..... 800-
248-2437

Spanish Aids Hotline..... 800-
344-7432

- o www.aidshotline.org

Alcohol / Drug Referral Service..... 800-
729-6686

- o www.addictionnomore.com

Arson Hotline..... 800-
723-2020

- o www.fire.state.mn.us

Cancer Hotline..... 800-
227-2345

- o cancerhotline.com

Center for Disease Control..... 800-
232-4636

- o www.cdc.gov

Child Abuse and Neglect Hotline..... 800-
422-4453

- o www.findcounseling.com/journal/child-abuse/child-abuse-hotlines-phone-numbers.html

Consumer Product Safety Commission..... 800-
638-2772

- o www.cpsc.gov

Depression and Anxiety 24-hour Helpline..... 800-234-
0038

Drug Information Service..... 800-
782-1875

- o www.minnesotahealthinfo.org/stay/alcohol.html

Emergency 24-hour Mental Health Helpline..... 320-587-
5502

No endorsement of services is being implied or promoted.

(Hutchinson Area Health Care – may call collect)

Family Planning / STD Hotline..... 800-783-2287

- o www.stdhotline.state.mn.us

Federal Emergency Management Agency (FEMA)..... 800-462-9029

- o www.fema.gov

First Call for Help Southwest (United Way 211)..... 800-543-7709

- o 211.org

Food Safety (Meat and Poultry) USDA..... 800-535-4555

- o www.fsis.usda.gov

Gambling Hotline..... 800-437-3641

- o www.miph.org/gambling

Gay and Lesbian Community Action Council (Out Front Minnesota) 800-800-0350

- o www.outfrontmn.org

Heartland Community Action Agency Inc..... 800-829-2132

Or..... 800-992-1710

- o www.heartlandcaa.org

Help for Families with Education Questions..... 888-234-4939

(advocacy for child’s education in English and Spanish)

Housing Discrimination..... 800-669-9777

- o www.hud.gov/complaints/housediscrim.cfm

Immunization Hotline..... 800-232-4636

No endorsement of services is being implied or promoted.

- www.cdc.gov/vaccines/about/contact/default.htm

Lawyer Referral Service (MN Bar Association)..... 800-292-4152

- www.mnfindalawyer.com

McLeod Alliance for Victims of Domestic Violence..... 800-934-0851

- www.mcleodalliance.org

National Center for Missing and Exploited Children..... 800-843-5678

- www.missingkids.com

National information Center for Children with Disabilities..... 800-695-0285

- www.nichcy.org

National Runaway Hotline..... 800-621-4000

- www.1800runaway.org

National STD Hotline (American Social Health Association) 800-227-8922

- www.ashastd.org

Pesticide Spills (Minnesota Duty Officer)..... 800-422-0798

- www.mda.state.mn.us

Poison Control..... 800-222-1222

- www.poison.org

Positive Link (HIV Positive Peer Support and Project AIDS hotline). 800-248-2437

- www.positivelink.org

Road Information (511)..... 800-542-0220

- www.511mn.org

- Safe Drinking Water Hotline..... 800-426-4791

 - www.epa.gov/safewater/dwinfo/mn.htm

No endorsement of services is being implied or promoted.

Social Security Administration..... 800-772-1213

- www.socialsecurity.gov

Suicide Prevention Hotline..... 800-273-8255

- www.suicidepreventionlifeline.org

University of Minnesota Extension Services and Info-U..... 800-587-0770

- www.extension.umn.edu

McLeod County Law Enforcement Numbers

For all **emergency** situations (fire, police, and ambulance) call: **911**

For all non-emergencies, call the police department at:

- Brownton 320-328-5266 or 320-864-3134 (after hours)
- Glencoe 320-864-5171, 320-864-6868 (fax)
- Hutchinson 320-587-2242
- Lester Prairie 320-864-3134
- Plato 320-864-3134
- Silver Lake 320-864-3134
- Stewart 320-562-2133, 320-562-2518 (fax)
- Winsted 320-485-2600
- TDD/TTY (all) 320-864-6493
- Sheriff 320-864-3134, 320-864-5920 (fax)

(Emergency help from McLeod County Social Services can be accessed through the Sheriff's Office during non-office hours)

MN Dept. of Corrections

722 11th St. E.
Glencoe, MN 55336
320-864-5591

Employment and Training

Glencoe Area Adult Basic Education

Assistance is available for GED, High School Diploma or English as a second language.

Adult Basic Education

Ridgewater College (north end)
2 Century Avenue
Hutchinson, MN 55350
234-234-8507

Hubert H. Humphrey Job Corps Center

Jobs, training and living expenses can be provided for ages 14 – 24.

1480 N. Snelling Avenue
St. Paul, MN 55108
651-642-1133
800-934-5627

Job Service / Work Force Center / Minnesota Department of Economic Security

Computer job bank, unemployment benefits, hiring assistance for employers, labor market information, job search workshops.

Ridgewater College (south end)
2 Century Avenue
Hutchinson, MN 55350
320-587-4740

Central Minnesota Jobs and Training Services

Training for full-time jobs, interest testing, on the job training, classroom training, resource referral, job seeking assistance. See contact numbers for each program. Main programs for employment and job training are:

Adult Job Training Program Act: Income eligible for adults 22 years and up.
800-284-7425 for appt.: assessments, classes job training, placement, resumes, referrals.

Older Worker Program: Income eligible for those age 55 and over who are interested in job training and or working in a job 20 hour or more per week, 800-284-7425

MN Family Investment Program (MFIP): Only through Public Assistance Programs referral. Assistance in education and job placement services to exit Public Assistance. Check with your Financial Worker at Social Services for a referral, 32—587-4740 or 800-284-7425.

No endorsement of services is being implied or promoted.

Technical College Consortium Training for College Students: WIA Specialist with the Ridgewater College assists in school program completion and with funds for unmet needs for full-time students in accredited college programs when eligible by layoff status or income guidelines, 320-587-4740 or 800-284-7425.

Summer Youth Programs: Jobs for income eligible youth ages 14 – 21, 800-284-7425.

Workforce Center (Ridgewater College)
2 Century Avenue
Hutchinson, MN 55350
320-587-4740
800-284-7425
320-234-7769 (fax)

Ridgewater College (Campuses in Hutchinson and Willmar)

Liberal Arts and Technical Degrees, self-paced learning options available, financial aid, customized and continuing education, Minnesota Career Information System (MCIS), DISCOVER, Connections Center, Adult Basic Education, GED, ESL, post-secondary options.

Hutchinson and Willmar Campuses
320-234-8500 or 800-722-1151

Small Business Management College Program (tuition cost)

Assistance in business planning, start-up, development, marketing, and loan information.

Ridgewater College
2 Century Avenue
Hutchinson, MN 55350
320-234-0251

West Central Industries (WCI)

Opportunities in facility based employment, supported employment and job training, placement and rehabilitation for individuals with disabilities.

900 Highway 15 South
Hutchinson, MN 55350
320-234-7515

Women in the Trades: Minnesota Women's Building

Mentors, advocacy, outreach, employment hotline and information.

550 Rice Street
St. Paul, MN 55103
651-228-0338

Women Venture: A Center for Career and Economic Development

Assistance in business planning, start-up development, marketing, and loan information.

2324 University Ave.
St. Paul, MN 55114
651-646-3808

Work Force Center / Minnesota Department of Economic Security

Rehabilitation Services

Vocational services for persons with disabilities. Services include: employment counseling, training, assistance in finding and maintaining employment and assistive technology.

Ridgewater College (south end)
2 Century Avenue
Hutchinson, MN 55350
320-587-4740

Domestic Violence

McLeod Alliance for Victims of Domestic Violence

General and legal advocacy, safety planning, transportation, 24-hour crisis line, temporary shelter, support group, books and videos, community education on domestic violence and information on medical, legal, and financial assistance. Adult male and female victims of domestic violence. Hispanic Outreach Worker available.

PO Box 393
Hutchinson, MN 55350
Phone: 320-234-7933, 800-934-0851
Fax: 320-234-6317

CRISIS LINE: 320-234-7933 or 800-934-0851

Email: advocate@hutchtel.net

McLeod County Court Administrator

Assistance with obtaining an "Order for Protection".

McLeod County Courthouse
830 11th Street East
Glencoe, MN 55336

Phone Numbers:

- Glencoe: 320-864-5551
- Hutchinson: 320-587-4680
- Stewart: 320-328-4413
- Winsted: 320-395-2568

Safe Avenue

Temporary housing for victims of domestic violence and their children, referral for battered men.

C/O Woodland Centers
Willmar, MN 56201
Phone: 800-992-1716
willmarshelter.com/

Family Planning and Pregnancy Education

Birthright of Hutchinson

Confidential free pregnancy testing

41 2nd Ave. SW
Hutchinson, MN 55350
320-587-5433 (24 hours)

Glencoe Regional Health Services

Prenatal classes for moms-to-be and their support person
1805 Hennepin Ave. N
Glencoe, MN 55336
320-864-3121
320-864-7887 (fax)

Hutchinson Area Health Care

Childbirth classes for expectant parents.

1095 Highway 15 South
Hutchinson, MN 55350
320-234-5081
320-234-4667 (fax)

LaLeche League of McLeod County

Counseling, support and trouble shooting for pregnant or breastfeeding mothers.
Lending Library – books on breastfeeding, nutrition, parenting, weaning and special circumstances. Monthly meetings.

1315 East 14th Street
Glencoe, MN 55336
320-864-4046

March of Dimes Birth Defects Foundation

Education materials and videos. Babies and You (work place presentation). Grants for groups promoting healthy babies.

2233 Roosevelt Road, Suite 11
St. Cloud, MN 56301
320-252-1156
320-252-9647

McLeod County Public Health
1805 Ford Avenue N, Suite 200
Glencoe, MN 55336

Phone numbers:

- Glencoe 320-864-3185
- Hutchinson 320-587-4680
- Lester Prairie/Winsted 320-395-2568
- Stewart 320-328-4413

Family Planning

Low cost comprehensive birth control services including counseling, physical exams, STD testing and birth control methods.

Follow Along Program

Follows children birth through 3 years through parental questionnaires to ensure appropriate developmental growth and to refer children to appropriate resources.

Home Visiting

Provides assessment of family functioning, stress and risk factors. Early identification and intervention. Para-professional (mentor) to work with the family under supervision of a Public Health Nurse.

Improved Pregnancy Outcome

Visits to high risk pregnant women for prenatal care and education, pre-term birth prevention education and service coordination. No charge.

New Baby Visits

All new parents are contacted by a Public Health Nurse to answer questions, provide education, information and support.

Pregnancy Testing

No cost pregnancy testing for any woman living in McLeod County.

SIDS (Sudden Infant Death Syndrome)

Consultation and Home Visit. Provide grief support and referral services for families who have experienced the loss of a child.

WIC (Women, Infants and Children Program)

A nutrition education and supplemental program designed to promote healthy pregnancy outcomes and proper nutrition for children up to age five.

Project Harmony

Case management services for pregnant women who use alcohol and/or drugs. No fee.

No endorsement of services is being implied or promoted.

Clothing / Furniture/ Children's Equipment

Hutchinson Area Health Care Auxiliary Thrift Shop

25 Main Street North
Hutchinson, MN 55350
Hours: Monday – Saturday, 9 a.m. – 5:00 p.m.
320-587-8434

Maplewood Academy – Twice is Nice

Free and reduced clothing, thrift shop.
700 Main Street North
Hutchinson, MN 55350
(located in the Community Service Building)
320-587-8277
Hours: Tuesday and Thursday 1:00 p.m. – 4:00 p.m., call for times to obtain free clothing. Drop off site open from 9:00 a.m. Sunday to 4:00 p.m. on Tuesday.

Mary's Wish

12 E. 8th Street
Waconia, MN
612-751-2207

Worn-a-Bit Shop

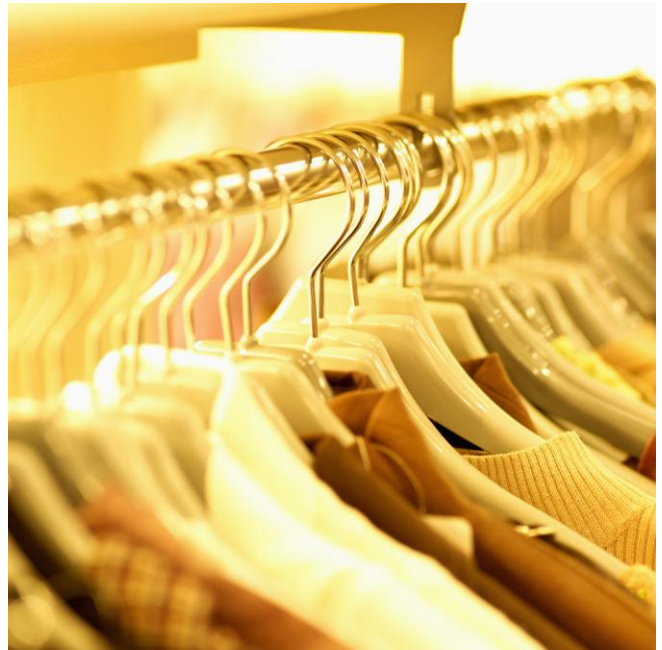
221 2nd Street North
Po Box 446
Winsted, MN 55395
No Phone
(Holy Trinity Convent Building, downstairs,
same entrance as Trojan Preschool)
Hours: Wednesday and Friday
12:30 p.m. – 4:30 p.m.

West Central Industries Thrift Store

900 Hwy. 15 South
Hutchinson, MN 55350
Phone: 320-234-7515
Fax: 320-234-7317

Care Connection

1114 Hennepin Ave North
Glencoe, MN 55336



Food and Nutrition

Nutrition Education Program

A free nutrition education program for families receiving or eligible for food stamps. Program assists families or individuals in learning more about nutrition and budgeting.

University of Minnesota Extension Service – McLeod County
840 Century Avenue
Hutchinson, MN 55350
320-587-0770
800-587-0770
320-234-4310 (fax)
e-mail: mcleod@extension.umn.edu

Fare Share Program

Low cost food packages in exchange for a small fee and two hours of volunteer service monthly. There are several different food packages available. Pay \$18 and volunteer to receive food package worth \$40 - \$45. Must be ordered 1 month ahead for pick up once a month.

Contact: Carol Brown (Hutchinson) 320-587-8454
Mary Ann Forcier (Glencoe) 320-864-4780

Food Shelf

Provides emergency food and resources for McLeod County residents.

Contact: Marietta Neumann

105 2nd Avenue SW
Hutchinson, MN 55350
320-587-4796

Or

808 East 12th Street
Glencoe, MN 55336
320-864-2088

Hours: Monday – Friday, 9:00 a.m. – 12:00 p.m.

e-mail: marietta@hutchtel.net



Food Stamps

Must be financially eligible.

McLeod Social Service Center
1805 Ford Avenue North
Glencoe, MN 55336
320-864-2144 (Glencoe)
320-587 -9533 (Hutchinson)
800-247-1756 (Stewart and Winsted)

MAC- Mothers and children

NAPS- Nutrition Assistance Program for Seniors

The MAC Program is for children until their 6th birthday that do not qualify for WIC and post-partum Moms for a year after the child's birth that meet income requirements. The NAPS Program is for people 60 years of age or older that meet the income requirements.

The food is distributed on the 2nd Tuesday (after the first full week of the month from 1:45 p.m. – 2:45 p.m. at the Glencoe Site of the McLeod Emergency Food Shelf. The Food Shelf is located at:

808 E. 12th Street
Glencoe, MN 55336
To register, call 1-800-365-0270

Meals on Wheels

Delivers hot meals. Provides nutrition education. Eligibility guidelines apply.

Brownton Community Center
310 Second Street North
Brownton, MN 55312
320-328-4181

Community Building Auditorium
West Main Street
Silver Lake, MN 55381
320-327-2621

Millie Beneke Manor
1319 Greeley Avenue
Glencoe, MN 55336
320-864-5728

Community Center
551 Prior Street
Stewart, MN 55385
320-562-2730

Hutchinson Area Health Care
1095 Highway 15 South
Hutchinson, MN 55350
320-234-4642
320-234-4707 (fax)

Midwest Farm Worker Employment and Training

Provides food vouchers to migrant farm workers in need who are eligible for other programs.

620 Litchfield Avenue SW
Willmar, MN 56201

Senior Dining

Congregate noon meal, fellowship and entertainment. Must be 60 years of age or older or have a disability.

Brownton Nutrition Center
120 4th Avenue North
Brownton, MN 55312
320-325-4181

Glencoe Nutrition for Elderly
1319 Greeley Avenue
Glencoe, MN 55336
320-864-5728

Hutchinson Senior Activity Center
Evergreen Apartments Site
Auditorium
115 Jefferson Street South
Hutchinson, MN 55350
320-587-6564

Silver Lake Congregate Meal Site
Community Building
West Main Street
Silver Lake, MN 55381
320-327-2621

Stewart Congregate Meal Site
Stewart Community Center
551 Prior Street
Stewart, MN 55385
320-562-2730

Winsted Dining Site
American Legion Club
161 1st Street North
Winsted, MN 55395

Salvation Army

Emergency assistance with food, shelter and transportation. Must have been referred by Social Services or Food Shelf for shelter and food. Accessed through the following Police Departments.

Glencoe Police Department
911 Greeley Avenue
Glencoe, MN 55336
320-864-5171
320-864-6868 (fax)

Hutchinson Police Department
10 Franklin Street SW
Hutchinson, MN 55350
320-587-2242
320-587-2677 (fax)

WIC (Women, Infants and Children)

Nutrition education and food vouchers for pregnant women, breast feeding women and children birth to age 5. Vouchers for: formula, milk, cheese, cereal, juice and eggs. Eligibility guidelines apply.

McLeod County Public Health
1805 Ford Avenue, Suite 200
Glencoe, MN 55336
320-864-3185 (Brownton, Glencoe and Silver Lake)
320-587-4680 (Hutchinson)
320-328-4413 (Stewart)
320-395-2568 (Winsted)

Transportation

Clinic Cab

Howard Lake, MN
800-962-3705

Hutchinson Taxi

595 Jefferson Street
Hutchinson, MN 55350
320-587-7878

McLeod County Veterans Service

Transportation for veterans and their spouses to area VA hospitals. No set schedule. Call for appointment. No charge.

320-864-5551 (Glencoe)
320-328-4413 (Stewart)

320-587-4680 (Hutchinson)
320-395-2568 (Winsted)

McLeod Social Service Center

Provides rides for eligible county residents for medical appointments or other related social services.

320-864- 3144 (Glencoe)
320-587 -9533 (Hutchinson)
800-247-1756 (Stewart and Winsted)

Tri-County Taxi

3277 80th Street, SW
Waverly, MN
763-658-4069

Trailblazer Transit

Almost everyone can ride – NO age restrictions. Fare is the same for everyone. No discounts. Fare is based on a 1 way ride. Fares start at \$1.50. All buses are equipped with a lift.

Hours: 7:00 a.m. – 5:00 p.m.
McLeod County Residents use Hutchinson Dispatch
320-587-4757
1-877-743-3828

**Housing/Weatherization and
Energy Assistance**

Crow River Habitat for Humanity

Build homes with and for low income families. Eligibility: Income for zero-interest mortgage, but not eligible for conventional mortgage. Must apply and qualify.

305 Main Street South, Suite 107

Hutchinson, MN 55350

320-587-8868

e-mail: crhfh@hutchtel.net

Hours: 9:00 a.m. – 1:00 p.m. Monday – Thursday

Friday by appointment only

Heartland Community Action Agency, Inc.

Energy Assistance Program (EAP)

This program may help pay heating bills, make emergency home repair, and provide crisis assistance to income eligible persons. Waiting list may apply.

Home Weatherization Grants

This program provides grants to low income homeowners and renters to make energy conservation improvements and repair or replace furnaces. Waiting list may apply.

Housing / Rental

This program provides housing rehabilitation loans, rental assistance, and transitional housing. Waiting list may apply.

218 Main Street South

Hutchinson, MN 55350

320-587-5244

800-829-2132

320-587-2677 (fax)

Hutchinson HRA

The Hutchinson HRA offers a number of housing programs to promote decent, safe and affordable housing within the community of Hutchinson. Some programs are also available in the surrounding areas of Hutchinson.

Hutchinson City Center

111 Hassan Street SE

Hutchinson, MN 55350

320-234-4235

fax 320-234-4240

Minnesota Housing Administer Finance Agency

Rehabilitation and revolving loans offered for home improvements. Must be income eligible to qualify. Hutchinson Housing and Redevelopment Authority City Center.

111 Hassan Street SE
Hutchinson, MN 55350
320-234-4251
320-234-4240 (fax)
Contact: Judy Flemming
e-mail: jflemming@ci.hutchinson.mn.us

McLeod Social Services Center

Provides immediate mortgage, rent, or utility payments for the current month in crisis situations. Eligibility guidelines apply.

1805 Ford Ave. North
Glencoe, MN 55336
320-864-3144 (Glencoe)
320-587-9533 (Hutchinson)
800-247-1756 (Stewart and Winsted)

Salvation Army

Emergency Assistance with food, shelter, and transportation. Must be referred by Social Services or Food Shelf for shelter and food. Accessed through Police Departments.

Glencoe Police Department
911 Greeley Avenue
Glencoe, MN 55336
320-864-5171
320-864-6868 (fax)

Hutchinson Police Department
10 Franklin Street SW
Hutchinson, MN 55350
320-587-2242
320-587-2677 (fax)

Rental Properties

Brownton

McLeod HRA Townhomes

644 3rd St N (4 Units)
730 3rd St N (4 Units)
Brownton, MN 55312
Contact: Jill Bengtson
320-950-0957

Midway Apartments

1224 Fourth Ave. South
Brownton, MN 55312
1 and 2 bedrooms
Contact: 507-345-1290

ERC Properties

1 Unit
Brownton, MN 55312
Contact: Donald Padrnos
320-328-5977

Glencoe

Beihoffer Apartments

715 Greeley Avenue North
FMHA financed
Contact: John Korngiebel
320-587-2486
Market Rate: N
Subsidized: Y

Colonial Apartments

1805 Tenth Street East
Glencoe, MN 55336
Contact: Mike Gavin
320-864-5142
Market Rate: Y
Subsidized: N

Parkview Apartments

424 Second St. N
Subsidized
507-345-1290

Shade Tree Retirement Center

117 Fourth Ave. S
Brownton, MN 55312
1 bedroom units
Congregate meals
Contact: Ron Beltz
320-328-5949

East Court Apartments

915 Stevens Ave. N
Glencoe, MN 55336
Mike Gavin
320-864-5142
Market Rate: Y
Subsidized: N

Orchard Estates

1900 Ford Avenue North
Glencoe, MN 55366
Independent Senior Community
Contact: Nancy Ellefson
320-864-7798
Market Rate: Y
Subsidized: N

Glenhurst Apartments

515-803 Abby Lane
Glencoe, MN 55336
Contact: Sylvan Becker
320-864-4393
Market Rate: N
Subsidized: Y

**Kestrel Park Townhomes
Managed by Metes & Bounds
Management Company**

Address: 2419 14th St E - Glencoe, MN
55336

Phone: 320-864-4869

Ext.

Fax: 320-864-9909

Email Address:

kestrelpark@metesbounds.com

Pryor Place Apartments

1524 13th St E

Glencoe, MN 55336

Contact: Kenny Lengen

952-466-5549

Market Rate: Y

Subsidized: NA

Park Place

2204 14th St E

Glencoe, MN 55336

Contact: 320-864-6575

FMHA financed

Contact: John Korngiebel

320-587-2483

Market Rate: N

Subsidized: Y

Union Heights Apartments

2100 Ninth St. E

Glencoe, MN 55336

1 and 2 bedroom apartments

Contact: Charlotte Klemen,

952-442-4325

Market Rate: Y

Subsidized: N

**Imperial Townhouse
Apartments**

427 15th St E

Glencoe, MN 55336

2 Bedroom units basement apts.

Contact: Tom Dressel

320-864-3629

Y

Subsidized: N

Millie Beneke Manor

1319 Greeley Avenue

Glencoe, MN 55336

Subsidized elderly units

Contact: Marge Neubarth

320-864-5282

Market Rate: N

Subsidized: y

Morningside Meadows

2505 E 11th St

Glencoe, MN 55336

Contact: Michael Gavin

320-864-5124

Market Rate: Y

Subsidized: N

West Court Apartments

908 Russell Avenue North

Glencoe, MN 55336

Contact: Mike Gavin

320-864-5142

Market Rate: Y

Subsidized: N

Morningside II

1206 Baldwin Avenue North

Glencoe, MN 55336

Contact: Michael Gavin

320-864-5124

Market Rate: Y

Subsidized: N

Town's Edge Estates

1710 and 1720

Newton Ave

Oliver Management

Contact: Janet Anderson

320-864-6600

Duplexes

20th Street E
801 and 803
Glencoe, MN 55336
Contact:
Hazel Gruenwaldt
320-864-3547

20th Street E
513 13th St (4 plex)
Glencoe, MN 55336
Contact: Gordan Dahl
320-864-3538

20th Street E
805, 807
Glencoe, MN 55336
Contact:
Richard Hayes
320-864-5245

Our House Board & Lodging
2018 10th St E
Contact: Maddie Stark
320-864-6613
Fee: \$45/day or \$1350/Month
Market Rate: Y
Subsidized: N

Hutchinson

Alexander Apartments
415 Jefferson St. SE
320-583-9389

Edgewood
985 Echo Drive
651-379-1584

Apollo Apartment
1065 Jefferson St. S
320-583-6601

Evergreen Apartment
115 Jefferson St SE
320-587-9432
Elderly/Subsidized

Century Court
715, 725, 750, 765, and 775
Century Ave. N
320-234-7243

Fairlane Apartments
445 High NE
320-234-7650

Clinton Apartments
550 Clinton
320-587-5458
Subsidized

Freemont Apartments
221 and 231 Freemont
320-587-7368

Colonial Apartments
345 Jefferson
320-587-4754

Gateway Central
11 Glen NE
Golfview Apartments
1165 Caroling
320-286-4480

Country Club Manor
765-815 School Road North
320-587-8280

HH & L
105 2nd Ave SW
320-587-7368

Heritage
965 Merrill
320-587-7368

Jefferson Court
435 Jefferson
320-587-8358

Johnson-Jefferson Apartments
970 Jefferson
320-587-4837

Leona Apartments
225 Echo Circle
320-587-6336

Luhman Building
535 Jefferson
320-587-7368

Menards Apartments
325 Jefferson
320-587-8358

North Place Apartments
415 School Road N
320-587-6336
Subsidized

Park Towers/HRA
133 3rd Ave SW
320-587-2168
Elderly/Disabled

Parkwood Apartments
45 North High
320-234-6995

Park View Terrace
213 4th Ave. NE
320-587-4632

Plaza One
1215 Echo Circle

Plaza Two
1025 Echo Drive

Plaza Three
1025 Echo Drive

Ridgedale Square Apartments
715 Ridgedale Avenue NE
320-234-7334 or 320-234-6997

Regency Apartments
235 Echo Circle
320-587-7368

Shamrock Eight
955 Echo Drive
320-587-8175

River Ridge
1095 Jefferson
320-587-7771

South Dale Apartments
907 Dale Street
320-587-8175

Twin Oaks Town Homes
1025 and 1035 Texas Ave
320-587-7505

Valley Vista
215 4th Ave NE
320-587-7610

Monterey Terrace
445 California
320-587-7368

Cedar Crest Estate (Assisted Living)
225 Shady Ridge Road
320-587-7077

Olson Apts
955 Jefferson
320-583-9089

Huski Townhouses
860-920 Texas Avenue N
320-234-6869

Pleasant Acres
255 Dr NW
320-234-6019

South Place
1220 Bradford St
320-587-6336

Southview Terrace
901 Hwy 15 S

Lester Prairie

Intown Apartments
50 Second Ave S
Contact: Sandra Fiecke
320-395-2872

Intown Apartments
83 Kennedy Ave
Contact: Jim Parpart
320-395-2619

Meadow Lane Apartments
506/508 Second Ave. N
FMHA financed

Silver Lake

Lake Side Manor
127 Park Ave. SW
Contact: Pearl Branden
320-327-2536

Twin Apartments
965-967 Jefferson St. S
320-583-9089

Verita Colonial
565 Jefferson St

Olson
525 School Rd
320-583-9089

Village Estates 1 and 2
987-991 Echo Drive

Ebent Apartments
464-468 Hwy 7 E
320-587-5442

Prairie Manor Apartments
Corner of Elm St. and 2nd Ave N
FMHA Financed
320-587-6336

Lincoln Apartments
72 Lincoln Ave
Contact: Philip Wagener
PO Box 321
St. Bonifacious, MN 55375

McLeod HRA Townhomes
611-77 Central Ave
Lester Prairie, MN 55354
320-905-0957

Uptown Apartments
301 North Center St
Contacts: Dale and JoAnn Kautz
320-327-2712

Village Apartments

104 SE Grove Ave
Contact: Judy Blazinki
320-327-2320

McLeod HRA Townhomes

103 – 109 Grove Ave NE
Contact: Jill Bengtson
320-905-0957

Stewart

Stewart Apartments

Bowman Street
Contact: Glynda Ballinger
952-938-4452

McLeod HRA Townhomes

721 N St.
Contact: Jill Bengtson
320-905-0957Bowman Street

Winsted

Juncewski Properties

760 Main Ave W
780 Main Ave W
221 and 231 Baker Ave
Contact: Len Junczewski
320-485-4408

Martison Apartments

340 McLeod Ave W
Winsted, MN 55395
Contact: Merlin Martinson
320-286-5555

Neff Apartments

150 5th St S
Contact: James Neff
320-485-2388 (home)
320-485-3881 (office)

Winsted Park Apartments

241 Baker Ave East
Contact: Provesco
612-559-2128

Northview Apartments

561 6th St N
Contact: Bob Bayerl
320-485-4108

Hagship Bank Apartments

101 1st St N
Contact: Jim Fowler
320-485-3831

Westbriar Apartments

301 Southshore Dr
Contact: Alex Miles
320-485-2328

Haugdahl Apartments

183 Main Avenue W
Contact: Steve Haugdahl
952-470-1102

Ridgedale Square Apartments

P.O. Box #7

Additional information on rental properties may be available through the Heartland Community Action Agency.

Legal/Court Services

Attorney Referral Service – Minnesota Bar Association

Statewide referral to an attorney in the caller's county.

430 Marquette Ave. # 403
Minneapolis, MN 55401
612-333-1183
800-292-4152
612-333-1216 (TDD)



Centro Legal

Low income, primarily Spanish speaking, intake is on Wednesday mornings. Sliding fee depending on income and family size. Civil legal services, translation of documents, interpreter services, Proyecto Justia (immigration, permanent residence, suspension of deportation, deferred action status, voluntary departure, political asylum, derivative citizenship, and naturalization), family law (child custody, spousal maintenance, support modification, legal termination of marriage), Proyecto Ayuda (legal services for Hispanic battered women).

2610 University Ave W # 450
St. Paul, MN 55114
651-642-1890

Fact Sheets

www.lawhelpmn.org

Golden Tongue

Court approved translating and interpreting services.

1322 E 13th St.
Glencoe, MN 55336-1629
320-864-3441

Legal Services Coalition

Handbook – “Farmer’s Guide to FMHA”, as well as legal rights.

2324 University Ave W
St. Paul, MN 55114
651-228-9105

McLeod County Court Services

Supervision of juveniles and adults convicted of misdemeanors and gross misdemeanors. Monitoring of child support order in McLeod County.

1805 Ford Ave. N. Suite 100
Glencoe, MN 55336

Phone numbers:

- Glencoe 320-864-3144
- Hutchinson 320-587-9533
- Stewart & Winsted 800-247-1756

Office of the Minnesota Attorney General

1400 Bremer Tower
445 Minnesota Street
St. Paul, MN 55101

Tel: (651) 296-3353 or 1-800-657-3787

Southern Minnesota Legal Services

Farm Family Law Project

Legal assistance, information, and referrals to financially distressed family farmers.

Legal Advocacy for Older Americans

Legal Aid

Provide legal advice to low income people at no charge.

12 Civic Center Plaza, Suite 3000
P.O. Box 3304
Mankato, MN 56002-3304

507-387-5588
507-387-2321 (fax)
507-388-8462 (TDD)

800-247-2299 (clients only)
888-575-2954 (new client intake)

Tel-Law

Library of 3-6 minute tape recordings of general legal information. Tapes on: Bankruptcy, landlord/tenant issues, criminal law, public benefits, domestic relations, credit and consumer law, estates and probate, and others.

612-752-6699

Tenant Advocate Home Line

612-728-5767

866-866-3546

Public Libraries

Pioneer Library System:
Phone numbers:

- Brownton 320-328-5900
- Glencoe 320-964-3919
- Hutchinson 320-587-8908
- Winsted 320-485-3909



Medical Resources

AIDS/HIV

Counseling and Testing for AIDS virus antibody. No charge (donations may be requested). Call one of the following agencies to schedule an appointment.

St. Paul Division of Public Health

Room 1111 Clinic
555 Cedar St
St. Paul, MN 55101
651-266-1352

Home Care and Hospice

Provide Home Care and Hospice. RN on call 24 hours at 320-234-5031.
Accept Private Pay – Medicare – Medicaid.
Office Hours: 8:00 a.m. – 5:00 p.m. Monday – Friday

Connect Care

125 Main Street South
Hutchinson, MN 55350
320-234-5031
320-234-5032
connect@hutchtel.net

McLeod County Public Health

1805 Ford Ave. N, Suite 200
Glencoe, MN 55336

Phone numbers:

- Glencoe 320-864-3185
- Hutchinson 320-587-4680
- Lester Prairie/Winsted 320-395-2568
- Stewart 320-328-4413

Child/Teen Check-up

Full Physical for Medial Assistance eligible children.

Disease Prevention/Control

Assistance in prevention and spread of diseases.

Early Intervention Services for Infants and Preschoolers

Provides assistance to families children who have (or may have) a handicapping condition. A multi-disciplinary team, consisting of a public health nurse, an educator, a social worker and a rehabilitation specialist, is available to identify and treat children with developmental delays. No Fee.

Family Planning

Low cost birth control services: Counseling, physical exam, STD testing, and birth control methods. Sliding fee, no one denied services if unable to pay.

Follow Along Program

Available for all children birth through 3 years. Questionnaires sent to parents every four months for parents to evaluate their child's development. They also receive information helpful to stimulate child development. No Fee.

Health Education/Promotion

Individual and group presentations on living healthy lifestyle (i.e. weight control, smoking cessation, exercise, and behavioral risk factors).

Health Screenings

Individual and group blood pressure screenings. Donations accepted.

Home Care Services

Part-time nursing, speech therapy, physical therapy and occupational therapy services provided in the home under your physician's plan care. These services provide: Care, treatment, instruction, evaluation, education and supervision for health problems or needs. Accepting insurance, MA. Sliding fee.

Immunizations

Low cost immunizations, education on appropriate immunization practices and schedules.

Improved Pregnancy Outcomes

Promotion of healthy pregnancies and healthy children at birth. No Fee.

Lead Screenings

Blood testing and environmental assessment of causes of elevated blood lead levels in children under age 6 and pregnant women.

MN Breast and Cervical Cancer Control Program

Visit by a public health nurse to parents of newborns to answer questions, provide support and make referrals. No Fee.

Pregnancy Testing

Free pregnancy tests, counseling and referrals for any McLeod Women.

Project Harmony

Case management services for pregnant women who use alcohol and or drugs. No fee.

Part-time Nursing, Speech Therapy, Physical Therapy and Occupational Therapy Services

Provided in the home under your physician's plan of care. These services provide: care, treatment, instruction, evaluation, education, and supervision for health problems or needs. Accepting insurance, MA, sliding fee.

1805 Ford Avenue N, Suite 200
Glencoe, MN 55336

Phone numbers:

- Glencoe 320-864-3185
- Hutchinson 320-587-4680
- Lester Prairie/Winsted 320-395-2568
- Stewart 320-328-4413

MN Children with Special Health Needs

MN Department of Health
1400 E Lyon St
Marshall, MN 56258
507-537-7158

State Information: 800-728-5420

Hutchinson Area Health Care

1095 Highway 15 S.
Hutchinson, MN 55350-5000
320-234-5000
1-800-454-3903

Hutchinson Medical Center

3 Century Ave SE
Hutchinson, MN 55350
320-587-2020
1-800-944-2690

Glencoe Regional Health Services

1805 Hennepin Avenue
Glencoe, MN 55336
320-864-3121
1-800-526-4242
320-864-7887 (fax)

Meeker County Memorial Hospital

612 Sibley Avenue
Litchfield, MN 55335
320-693-3242

American Red Cross

The American Red Cross is a humanitarian organization, led by volunteers, that provide relief to victims of disasters and helps people prevent, prepare for, and respond to emergencies. It does this through services that are consistent with its congressional charter and fundamental principles of the International Red Cross Movement.

McLeod County Chapter

P.O. Box 174
Glencoe, MN 55336
320-864-6466
320-864-6350 (fax)



No endorsement of services is being implied or promoted.

Medical Payment Programs

McLeod Social Service Center

Pre-admission nursing home screening. Services under state waiver programs including community alternatives for disabled individuals, traumatic brain injury, community alternative care, mentally retarded/related conditions, and elderly waiver/alternative care. Eligibility determination for Medical Assistance and Minnesota Care. Eligibility guidelines apply.

1850 Ford Ave. N., Suite 100
Glencoe, MN 55366

Phone numbers:

- Glencoe 320-864-3144
- Hutchinson 320-587-9533
- Stewart and Winsted 800-247-1756

Minnesota Care

Health insurance plan for eligible children and adults; monthly premium based on income; some income guidelines. Covers: Well baby exams, outpatient doctor visits, dental care, prescription eyeglasses and vision care, prescription drugs, immunizations, and some hospitalization. Monthly premium based on income.

444 Lafayette Road
St. Paul, MN 55155
800-657-3672 (has messages in multiple languages)

Minnesota Migrant Health

This program provides limited medical care to migrant farm workers who are ineligible for other state/Federal programs.
State Office: 800-842-8693

McLeod County Dentists

Contemporary Dental
Dr. Shawn Knorr, DDS
Dr. Merrill Nelson
1015 Greeley Ave N
Glencoe, MN 55336
320-864-3129

Dr. Josh Campbell DDS
2 Franklin St
Hutchinson, MN 55350
320-587-3993

Dr. Daniel Carlson DDS
720 Century Av SW
Clock Tower Plaza
Hutchinson, MN 55350
320-587-3020

Dr. Steve DeKoster DDS
1126 Ives Ave N
Glencoe, MN 55336
320-864-3215

Dr. John Gillard
945 Echo Dr SE
Hutchinson, MN 55350
320-587-2769

Dr. Sarah Heuer DDS
20 Juniper St
Lester Prairie, MN
320-395-2323

Dr. Thomas Inglis DDS
45 Washington Ave E
Hutchinson, MN 55350
320-587-3502

Dr. Kent Kuball
10 Hassan St NE
Hutchinson, MN 55350
320-587-2726

Dr. James Lobeck
20288 HWY 15
Hutchinson, MN 55350
320-587-5504

Dr. Thomas Lyke
945 Echo Dr. SE
Hutchinson, MN 55350
320-587-2769

Dr. Chuck Neufeld DDS
45 3rd Ave Se
Hutchinson, MN 55350
320-587-6405

Dr. Thomas Schoeneberger DDS
1010 Greeley Ave
Glencoe, MN 55336
320-864-5128

Dr. Ivan Streif DDS
720 Century Ave SW
Hutchinson, MN 55350
320-587-4770

Dr. Barbara Zajicek
10 Hassan St NE
Hutchinson, MN 55350
320-587-2726

Dr. Richard Carver DDS
1406 Cedar Ave N
Glencoe, MN 55336
320-864-4206

Dr. Michael Thoennes DDS
131 Main Ave W
Winsted, MN
320-485-4344

Dr. Steve Flinn DDS
Dr. Mach
107 1st Ave SW
Hutchinson, MN 55350
320-5872146

Dr. Bill Dunbar
1126 Ives Ave N
Glencoe, MN 55336

Family and Cosmetic Gentle
Hutchinson Mall
1060 Hwy 15 South #84
Hutchinson, MN 55350
320-234-6677

Dr. James Nef DDS
123 Fairlawn Ave
Winsted, MN
320-485-3881

**Dr. Joseph Wang (Oral
Surgery)**
45 Washington Ave E
Hutchinson, MN 55350
320-587-4644

Dental Referrals

Pediatric & Adolescent Dentistry

204 Star St - Main Office, Mankato MN 56001 (507) 387-4078

OR 26 N Broadway, New Ulm MN 56073, (507) 354-8943

Takes MA Clients

Monday – Friday 8:00 a.m. 5:00 p.m.

Central Minnesota Pediatric Dentists PA

1900 Centra Care Circle

Centra Care Health Plaza

Suite 0350

St. Cloud, MN 56303

320-253-0272

Monday

9:00 a.m. - 5:00 p.m.

Tuesday, Wednesday, and Thursday

8:00 a.m. - 5:00 p.m.

Friday

9:00 a.m. - 4:00 p.m.

Smile Center (ages 4 and up)

13899 Highway 13 (Just north of County Road 42)

Savage, MN 55378

800-422-6904

952-440-2292

Monday – Friday

7:00 a.m. – 10:00 p.m.

Saturday & Sunday

8:00 a.m. – 5:00 p.m.

Rice Regional Dental Center

A collaborative effort between Rice Memorial Hospital and the University of Minnesota School of Dentistry to provide dental care for under served patients in rural areas. The Dental Clinic is open to anyone, regardless of insurance status. All age groups are welcome and fees are determined on a sliding scale. Please contact us for more information on the clinic or to make an appointment:

email: kcarl@rice.willmar.mn.us

320-214-2620

or toll-free: 1-877-214-2611

Chemical Dependency

New Beginnings at Waverly

A 28-day primary inpatient chemical dependency treatment program for adults, 18 and older and an adolescent inpatient chemical dependency treatment program for ages 13-17 and 18, if in high school. Chemical dependency evaluations. Both treatment programs have aftercare.

109 North Shore Drive
Waverly, MN 55390
800-487-8758

Day by Day Recovery Center

Marty Sherman LADC, Treatment Director
Phone/Fax: 888-633-0211
marty@daybydayrecovery.com

The Counseling Clinic of Winsted

Chemical dependency evaluations. Primary outpatient chemical dependency treatment and aftercare.

551 4th St. N
P.O. Box 905
Winsted, MN 55395
320-485-2323

Hutchinson Area Health Care

Chemical dependency evaluations. Primary outpatient chemical dependency treatment and after care. Outpatient treatment provided for ages 15 and older.

1095 Highway 15 S
Hutchinson, MN 55350
320-234-4610

McLeod Social Service Center

Chemical dependency assessments to determine eligibility for funding inpatient treatments, outpatient treatments, halfway housing, or extended care.

1805 Ford Ave N, Suite 100
Glencoe, MN 55336

Phone numbers:

- Glencoe 320-864-3144
- Hutchinson 320-587-9533
- Stewart/Winsted 320-247-1756

Total Compliance

A resource for parents to obtain low cost Drug Urine Analysis.
320-864-4584

New Ulm Medical Center

A 28-day primary inpatient chemical dependency treatment program for adults, 18 and older. Aftercare.

Chemical Dependency Unit
1324 5th St. N
P.O. Box 577
New Ulm, MN
507-233-1000

Project Harmony

Services to pregnant women who use alcohol and/or drugs. Team of Public Health Nurse, Social Worker and Chemical Dependency Counselor assist pregnant women in reducing barriers to sobriety. No Fee. No Income Guidelines.

McLeod Public Health
1805 Ford Ave N, Suite 200
Glencoe, MN 55336

Phone numbers:

- Brownton/Glencoe/Silver Lake 320-864-3185
- Hutchinson 320-587-4680
- Winsted 320-395-2568
- Fax 320-864-1484

Project Turnabout

Among other programs, a culturally specific program for chemically dependent Latinos. Evaluation, treatment, and aftercare.

P.O. Box 116
Granite Falls, MN 56241
800-862-1453

St. Cloud Hospital

A 28-day intensive outpatient chemical dependency treatment program and in patient with sober housing. Aftercare.

Alcohol and Chemical Dependency Unit
1406 6th Ave N
St. Cloud, MN 56303
800-835-6652

Willmar Regional Treatment Center

A 28-day primary inpatient chemical dependency treatment program for adults, 18 and older. 90-day extended inpatient treatment program. Mental illness/Chemical Dependency Program.

P.O. Box 1128
Willmar, MN 56201
320-231-5100

MEADA (Methamphetamine Education and Drug Awareness)

Free drug and alcohol presentations throughout McLeod County.

Contact Susan Suemnick 320-864-5591

Mental Health/Counseling Services

Individual, marital, family counseling, separation/divorce, stepfamily issues, pre-marriage counseling, self-esteem, anxiety, stress management, single parenting issues, depression, unplanned pregnancy, life transitions, sexuality, grief/loss, group therapy, consumer credit counseling, parenting.

Dr. Mark Smith, PHD

1091 Highway 15 S
Hutchinson, MN 55350
320-587-2939

Greater Minnesota Family Service

P.O. Box 1810
Willmar, MN 56201
320-214-9692 Ext. 2

Hutchinson Area Health Care

Crisis Services

Helpline available 24-hours a day, in person or by telephone (collect calls accepted).

320-587-5502

Inpatient Care

Unit activities, group therapy, occupational therapy, individual therapy.

320-234-4600

Mental Health/Medication Management

Individual, family, DBT, and group therapy. Day or evening hours available. For more information call the number below. Sliding fee available for eligible individuals.

320-234-4610

Jonas Center

925 12th St. E
Glencoe, MN 55336
320-864-6139 or 952-361-9700
320-864-6130 (fax)

Lighthouse Counseling

P.O. Box 655
Hutchinson, MN 55350
320-234-7100
800-939-7164
lighthousecounseling@juno.com

Lutheran Social Services

Faith Lutheran Church
335 Main St. South
Hutchinson, MN 55350
320-587-2093

Stepping Stone

Provides mental health, occupational and speech therapy
320-587-2326
897 Highway 15 S
Hutchinson, MN 55350

McLeod County Public Health

Home visits to parents with children having mental health problems, early identification and intervention for emotional and behavioral problems. Visits for adults with a doctor's order for mental health assessment and medical monitoring.

1805 Ford Avenue, North, Suite 200
Glencoe, MN 55336

Phone numbers:

- Glencoe 320-864-3185
- Hutchinson 320-587-4680
- Lester Prairie/Winsted 320-395-2568
- Stewart 320-328-4413

McLeod Social Service Center

Mental health case management, early intervention, crisis assistance, family community support services, children day treatment, professional intensive in-home therapy, and medication monitoring.

Sliding fee for respite care for children with severe emotional disturbances.

1805 Ford Avenue, North, Suite 100
Glencoe, MN 55336

Phone numbers:

- Glencoe 320-864-3144
- Hutchinson 320-587-9533
- Stewart/Winsted 320-247-1756

Support Groups

Alcoholic Anonymous, Narcotics Anonymous, Alanon and Adult and Adult Children of Alcoholics

Alcoholic Anonymous (AA) and Narcotics Anonymous (NA) are fellowships of men and women who share their experience, strength and hope with each other so that they may solve their common problem and help others recover from narcotics and alcoholism.

Alanon is a support group for the families of an alcoholic.

Adult Children of Alcoholics (ACA) is a support group for those whose parents abused alcohol.

Arlington

Group	Day/Time	Location	Contact
AA 238-2370	Monday/8:00 p.m.	St. Mary's Church	Ken, 320-
Alanon 320-238-2370	Monday/8:00 p.m.	St. Mary's Church	Myra,

Lester Prairie

Group	Day/Time	Location	Contact
AA	Tuesday/8:00 p.m.	City Hall	Joan, 320-864-6026

Winsted

Group	Day/Time	Location	Contact
AA Gerald, 320-485-2245	Monday/8:00 p.m.	St. Mary's Care Center	
NA 320-485-2245	Wednesday/7:30 p.m.	Holly Trinity Church	Gerald,
Alanon Gerald, 320-485-2245	Wednesday/7:00 p.m.	Distinctive Dental	

Hutchinson Area Health Care Support Groups

Breast Cancer Support Group

2nd Tuesday of each month
 7:00 – 8:30 p.m.
 Faith Lutheran Church (East Entrance)
 Contact: Renee Wetterling
 320-587-6701

No endorsement of services is being implied or promoted.

Baby and Me Breastfeeding Support Group

2nd Tuesday of each month

12:30 – 2:00 p.m.

HAHC, Conference Room A/B

Or

4th Tuesday of each month

10:00 – 11:30 a.m.

Glencoe Regional Health

Conference Room A

Contact: Lisa Hansen

320-234-4749

Cardiac and Diabetes Support Group

1st Thursday of each month excluding June/July.

Time varies from 1:30 – 3:00 p.m. or 6:00 – 7:30 p.m.

HAHC, Conference Room A/B

Contact: Lisa Elfering

320-234-5151

Caregivers of Children with Diabetes Support Group

2nd Monday every other month starting in September

6:30 – 7:30 p.m.

HAHC, Conference Room A/B

Contact: Lisa Elfering

320-234-5151

Adult and Grief Support Group

Offered Spring and Fall – one time a week for 7 weeks.

Contact: Mary Nelson

320-234-4738

McLeod Alliance for Victims of Domestic Violence, Inc.

Support group for victims of domestic violence. – “Voices”, support for children who have witnessed domestic violence.

P.O. Box 393

101 Main St S, Suite 201

Hutchinson, MN 55350

800-934-0851 or 320-234-7933

ARC McLeod

Information and support for parents of children and adults with developmental disabilities and other special needs. For further information regarding McLeod County resources, services and when support meetings are held, contact the ARC Central Office.

Bev Kahler
6112 322nd Street
St. Cloud, MN 56303
800-775-3196 or 320-240-9550

Fibromyalgia Support Group

Information and support.

Contact: Dorie Buck
320-587-4673

Grief Recovery Friends

Offers new strength, comfort and friendship to those who have experienced the death of a loved one. Meets the second Wednesday of each month at 7:30 p.m. at Oakland Chapel.

Contacts: Dan and JoAnne
320-5874436
Mike and Pam
320-587-6458
Robert Hantge
320-587-2128

McLeod County NAMI

Support group for mentally ill persons. Meets the first Tuesday of the month at 7:00 p.m. in the Fireside Room.

Congregational-UCC Church
31 4th Avenue SW
Hutchinson, MN 55350
Contact: Gail Johnson
320-275-2912

Mothers of Multiples

Support group for mothers of twins, triplets and more. Yearly fees \$15.00. Meets monthly in Waconia.

Contact: Gladys Kirsch
320-864-1344

Parent Connection

Parent support group with trained facilitators and a structured childcare program. No charge. Monday evenings from 6:30 – 8:00 for parents of children birth – preteen, and 8:00 – 9:30 for parents of adolescents.

Christ the King Lutheran Church
1040 South Grade Road SW
Hutchinson, MN 55350
320-587-8639

TOPS

Weight loss support group. Meets Mondays at 7:00 p.m. (weigh-in begins at 6:20 p.m.) and/or Thursdays at 9:00 a.m. (weigh-in begins at 8:00 a.m.)

Bethlehem United Methodist Church
655 Miller Avenue
Hutchinson, MN 55350

Contact: 320-587-8155 or 320-587-8762 for further information.

Support Services

Parent Liaison/Advocate

Support for families in dealing with multiple service agencies.

Heartland Community Action Agency
320-587-5244
800-829-2132

Lion's Club

May pay for eye examinations, eye glasses and other optical needs.
Referral through community agencies.

McLeod County Public Health

Infant car seat rental information. Free convertible seats to income eligible families when available.

1805 Ford Ave. N, Suite 200

Phone numbers:

- Glencoe 320-864-3185
- Hutchinson 320-587-4680
- Lester Prairie/Winsted 320-395-2568
- Stewart 320-328-4413

McLeod Social Service Center

Assistance with payment of recreational activities, obtaining a mentor, and respite care for children with severe emotional disturbances. Summer day camp (one week) for children 7-11. Assistance in obtaining school supplies and Christmas gifts for children.

1805 Ford Ave. N, Suite 100

Phone numbers:

- Glencoe 320-864-3144
- Hutchinson 320-587-9533
- Stewart/Winsted 320-247-1756

3M CARES Group

Provides volunteers for non-profit efforts in Hutchinson. Office Hours are 8:00 a.m. – 12:00 noon.

905 Adams St SE
Hutchinson, MN 55350
320-234-200

No endorsement of services is being implied or promoted.

McLeod Treatment Programs, Inc. – Visitation/Exchange Center

Provides monitored visits and/or visitation exchanges of children between parents. Available to all families. Monday and Wednesday, 4:00 p.m. – 6:00 p.m., Friday, 4:00 p.m. –8:00 p.m., Saturday and Sunday, 8:00 a.m. – 12:00 noon and 4:00 p.m. – 8:00 p.m. By appointment only. Fees apply sliding fee available.

1065 5th Ave. SE
P.O. Box 364
Hutchinson, MN 55350
320-587-9790
320-587-3767 (fax)

Foundation for Challenged Children

Financial assistance in obtaining special needs equipment that is not approved by government programs.

Roger Mackendanz
16108 720th Avenue
Dassel, MN 55325
320-587-7872

Disability Linkage Line

Free, statewide Information, Referral and Assistance program in MN for individuals with disabilities or chronic illness, their families and service providers. Options Counselors assist people with exploring resources and services in their community and throughout the state. Disability Linkage Line is also familiar with state and federal programs such as; Medical Assistance, Medicare, and Social Security. Options Counselors can also discuss health insurance options, Medicare part D enrollments and extra help options.

Disability Linkage Line is available Monday through Friday, 8:30am to 5:00pm. Phone number: 1-866-333-2466

PACER CENTER

Minnesota nonprofit organization that provides information to Minnesota families of children with **all** disabilities. Most PACER services are provided free of charge to Minnesota families. PACER receives funding from a variety of government, foundation, and private sources.

Regular office hours are 8:00 am – 5:00 pm CST.

Phone: 952-838-9000

Common Cup Ministries

A combined outreach ministry of Hutchinson Churches to provide help for those who fall through the cracks of other assistance. Limited funds are available for food, lodging, and other necessities (transportation, telephone, electricity, clothing, fuel and holiday vouchers, etc.)218 Main Street South

Suite 100

Hutchinson, MN 55350

Phone: 320-587-2213

First Lutheran Church

925 13th St. E., Glencoe, MN 55336

320-864-5511- **by appointment only**

Churches

Brownton

Grace Lutheran
8638 Plum Avenue
320-328-5533

Immanuel Lutheran
700 Division Street
320-328-5522

Prairie Community
700 First Avenue N
320-395-2320

St. Matthew's Lutheran
16104 20th Street
320-328 -5773

Glencoe

Berean Baptist
727 East 16th Street
320-864-6113

Christ Lutheran
1820 North Knight Avenue
320-864-4549

First Congregational UCC
1400 North Elliott Avenue
320-864-3855

First Evangelical Lutheran
925 13th Street E
320—864-5522

Good Shepherd Lutheran
1407 Cedar Avenue
320-864-6157

Peace United Church of Christ
520 East 11th Street
320-864-4556

St. John's Evangelical Lutheran
4505 80th Street
320-864-3093

St. Pius X Catholic
1103 10th Street E
320-864-5162

Hutchinson

Apostolic Lighthouse
560 Adams Street SE
320-587-0867

Bethlehem United Methodist
655 Miller Avenue
320-587-3312

Christ the King Lutheran
PO Box 369
1040 South Grade Road SW
320-587-2276

Church of Jesus Christ of Later Day
Saints
770 School Road NW
320-587-5665

Faith Lutheran
335 Main Street South
320-587-2093

First Congregational United Church of
Christ
31 4th Avenue SW
320-587-2125

Grace Lutheran
430 5th Avenue SW
320-587-3051

Hunters Ridge Community
850 School Road SW
320-587-8374

Hutchinson Evangelical Free
990 5th Avenue SE
320-234-5979

Immanuel Evangelical Lutheran
20882 Walden Avenue
320-587-4857

Jehovah's Witness
1201 School Road
320-587-8347

Oak Heights Covenant
1398 South Grade Road
320-587-8483

Our Savior's Lutheran
800 Bluff Street
320-587-3318

Peace Lutheran
400 Franklin Street SW
320-587-3031

River of Hope
1395 South Grade Road SW
320-587-4414

Riverside Assembly of God
20924 State Highway 7 W
320-587-2974

St. Anastasia Catholic
460 Lake Street SW
320-234-6129

Seventh Day Adventist
820 Main Street North
320-587-6054

Shalom Baptist
1215 Roberts Road SW
PO Box 324
320-587-2668

Shepherd's Fold Baptist
705 5th Avenue SW
320-234-3794

Vineyard United Methodist
PO Box 484
1395 South Grade Road
320-587 2200

Word of Life Outreach Center
950 School Road SW
320-587-9443

Lester Prairie

Bethel American Lutheran
77 Lincoln Avenue
320-395-2125

Evangelical United Church of Christ
700 1st Avenue N
320-395-2320

St. Paul's Lutheran
124 Maple Street N
320-395-2573

St. Peter's Lutheran
90 Kennedy Avenue
320-395-2029

Plato

Lighthouse Assembly of God
10478 Bell Avenue
320-238-2181

St. John's Lutheran
216 McLeod Avenue N
320-238-2338

St. Paul's United Church of Christ
308 First Street NE
320-238-2206

Silver Lake

Church of the Holy Family
720 Main Street W
PO Box 326
320-327-2261

Faith Presbyterian
108 West Main Street
PO Box 307
320-327-2452

Grace Bible
300 Cleveland Street
PO Box 267
320-327-2352

Stewart

St. Boniface Catholic
PO Box 202
551 Main Street
320-562-2344

St. Matthew's Lutheran
2402 County Road 7
320-562-2647

St. Paul's Lutheran
300 Croyden Street
320-562-2352

Winsted

Holy Trinity Catholic
111 West Winsted Avenue
320-485-4421

St. John's Lutheran
410 North First Street
320-485-2522

Camps

Brainerd Teen Adult Retreat “Life in the FASlane”

At Camp Confidence in northern MN for those with the diagnosis of FASD.

MOFAS (MN Organization on Fetal Alcohol Syndrome)

1885 University Avenue

Suite 395

St. Paul, MN 55104

651-917-2370 or 1-866-90-MOFAS (66327) www.mofas.org

Camp Buckskin

Serving boys and girls ages 6-18 with diagnosis of ADHD/ADD and/or learning disabilities.

PO Box 389

Ely, MN 55371

218-365-2121

Winter:

8100 Wayzata Blvd

Golden Valley, MN 55426

www.campbuckskin.com

Camp Courage and Courage North

Courage Center operates two camps: *Courage* near Maple Lake and *Courage North* near Bemidji.

- Courage camp ages 7 and older for physically disabled or non-developmentally delayed; 7-13 communications disorders; and kids with cancer, asthma or sickle cell anemia.
- Courage North ages 7-17 who are deaf or hard of hearing, hemophilia or recovering from severe burns.

3915 Golden Valley Road

Golden Valley, MN 55422

763-520-0504 or 866-520-0504

www.couragecamps.org

Camp Discovery/Courage North – Lake George, MN

Residential camp for children and young adults with high functioning Autism/Asperger Syndrome.

Autism Society of MN
2380 Wycliff Street #102
St. Paul, MN 55114
651-647-1083
<http://www.ausm.org/>

FASD Family Retreat

Southern Minnesota
Camp Omega
22750 Lind Avenue
Waterville, MN 56096
507-327-0706
www.mofas.org

Camp Friendship

Traditional and specialty resident camp, year round respite care for persons with or without disabilities.

Friendship Ventures
10509 108th Street NW
Annandale, MN 55302
320-274-8376 , 952-852-0101, or 800-450-8376
www.friendshipventures.org

Camp Hand-In-Hand

For individuals who have autism or PDD (Pervasive Developmental Disorders).

Autism Society of MN
2380 Wycliff Street
Suite 102
St. Paul, MN 55114
651-657-1083 ext 16
<http://www.ausm.org/>

Camp Knutson

For children and adults that are emotionally disturbed, mentally handicapped, hearing impaired or chemically dependent.

11169 White Fish Avenue
Cross Lake, MN 56442
218-543-4232
www.campknutson.org

Camp Needlepoint/Daypoint

Residential and day camps for children with diabetes at Camp St. Croix at Hudson, WI.

American Diabetes Association
Parkdale Center
6100 Gamble Drive
Suite 394
St. Louis Park, MN 55416
763-593-5333 ext. 6596
1-800-DIABETES
<http://diabetes.org>

Camp Oz

For children with epilepsy located at YMCA Camp Ihduhapi in Loretto, MN

Epilepsy Foundation of Minnesota
1600 W. University Avenue, Suite 205
St. Paul, MN 55104
651-287-2310 or toll-free 1-800-779-0777
www.efmn.org

Camp We No Wheeze Central

Overnight camp for children on daily preventative asthma medication at Camp Courage in Maple Lake, MN. Operated by the American Lung Association of MN.

1511 Northway Drive, #101
St. Cloud, MN 55303
320-654-8266 ext. 24
www.alamn.org

Creative Options Respite Care Services

Offered at Camp Friendship and Eden Wood Center. Program lets the individual relax and re-energize while family or care provider enjoys a break from the daily demands of caring for a person with special needs.

10509 108th Street NW
Annandale, MN 55302
952-852-0101 or toll-free 800-450-8276
www.friendshipventures.org

Friendship Ventures

Children and adults with mental retardation and other development disabilities.

10509 108th Street NW
Annandale, MN 55302
952-852-0101 or
800-450-8276
www.friendshipventures.org

Opportunities Partners' Career Camp

Students with disabilities explore the world of work and develop skills for success.

Developmental disabilities, brain injury, autism age 16-21

952-938-5511

www.opportunitiespartners.org

Ridgewater Summer Camp

It is never too early to think about the future! All children students who have completed grades 5th – 8th grade are invited to attend the Ridgewater College Summer Camp. Campers will learn about future career possibilities and programs offered at Ridgewater College as well as other colleges. Through hands-on, interactive classes and team building activities, students will be given the opportunity to expand their minds and become excited about the future. Affordable participation fee - some scholarships available.

Contact: Tari Niemeyer
320-234-8540
tari.niemeyer@ridgewater.edu

Other camps may be available during the summer. For further information, call McLeod County Social Service Center.

- **Glencoe** 320-864-3144
- **Hutchinson** 320-587-9533
- **Stewart and Winsted** 800-247-1756

No endorsement of services is being implied or promoted.

Clubs

4-H

University of MN Extension Service-McLeod County
840 Century Avenue
Hutchinson, MN 55350-3754
320-587-0770 or 800-587-0770
320-234-4310 (fax)
e-mail: mcleodnextension.umn.edu

Boy Scouts

Joel Gunderson (Referral source for all of McLeod County)
Phone: 320-587-8977

Girl Scouts

Peacepipe Girl Scout Council
800-332-4475

Jeanne Reynolds , Local Service Manager
320-587-3998

Community Education

Recreational and other activities for children and families. Contact your local community education office at:

- Glencoe/Silver Lake 320-864-2698
- Hutchinson 320-587-2975
- Lester Prairie 320-395-2613
- Winsted 320-562-2110

For additional youth activities, contact your local church or consult your local newspaper.

The McLeod County Resource Directory has been developed
through support
with the following:



**MCLEOD FAMILY
CONNECTION**
FAMILY SERVICE COLLABORATIVE OF MCLEOD



SOUTHWEST INITIATIVE
FOUNDATION

MINNESOTA
THRIVE
INITIATIVE

*Promoting the Healthy Social and Emotional
Development of Our Youngest Children*

MINNESOTA INITIATIVE FOUNDATIONS

No endorsement of services is being implied or promoted.